

SAILING INSTRUCTIONS

Early Bird Regatta - Niantic Bay Yacht Club Sunday June 3, 2018



- 1st Warning at 1100 hrs.
- Race Committee will use CH 72

1 Rules

- 1.1 The regatta will be governed by the Racing Rules of Sailing (RRS), the Prescriptions of US Sailing, the Ensign Class rules, Atlantic Class Rules, the Notice of Race and the Sailing Instructions.
- 1.2 There will be no exclusions. RRS A2 is changed.

2 Notices to Competitors

- 2.1 Notices to competitors will be posted on the official bulletin board(s) located in the Clubhouse adjacent to the fireplace, and will be announced on channel 72 at 1045 hours on the day of the race noted above.

3 Changes to the Sailing Instructions

- 3.1 Any changes to the Sailing Instructions will be posted before 1000 on the day of the race noted above, and may be announced on VHF Ch. 72 prior to the first warning.





4 Signals Made Ashore

- 4.1 Signals made ashore will be displayed at the Clubhouse flag pole.
- 4.2 Code flag AP with two guns means, "Racing is postponed". The warning signal will be made not less than 20 minutes after flag AP is lowered (with one horn).
- 4.3 Code flag B (or a red flag) fully hoisted with one horn or gun means; "Protest period has begun." When lowered, it means; "The protest period has ended."

5 Schedule of Races

- 5.1 Competitors must check-in with the Race Committee prior to the warning of the first race by sailing past the stern of the Committee Boat and hailing their sail number.
- 5.2 If multiple races are scheduled, The RC signal boat will fly the 2nd Substitute.
- 5.3 Warning for the first race: 1100 (followed by other Classes)
- 5.4 Warning for any subsequent races will occur after all vessels in a class have finished or are no longer competing in their preceding race.
- 5.5 No warning signals will be made after 1500.

6 Class flags

- | | | |
|--|---|-------------------------------------|
| Class 1: Numerical Pennant "1" |  | (white background with red circle) |
| Class 2: Numerical Pennant "2" |  | (blue background with white circle) |
| Class 3: Numerical Pennant "3" |  | (red, white, blue vertical stripe) |
| Class 4: Numerical Pennant "4" |  | (red background with white cross) |
| Atlantic Class: Atlantic Class Flag | | |
| Ensign Class: Ensign Class or Fleet Flag | | |

7 Racing Area Restrictions

- 7.1 All yachts must pass to the East of Three Foot Rock, C "7".

8 The Courses

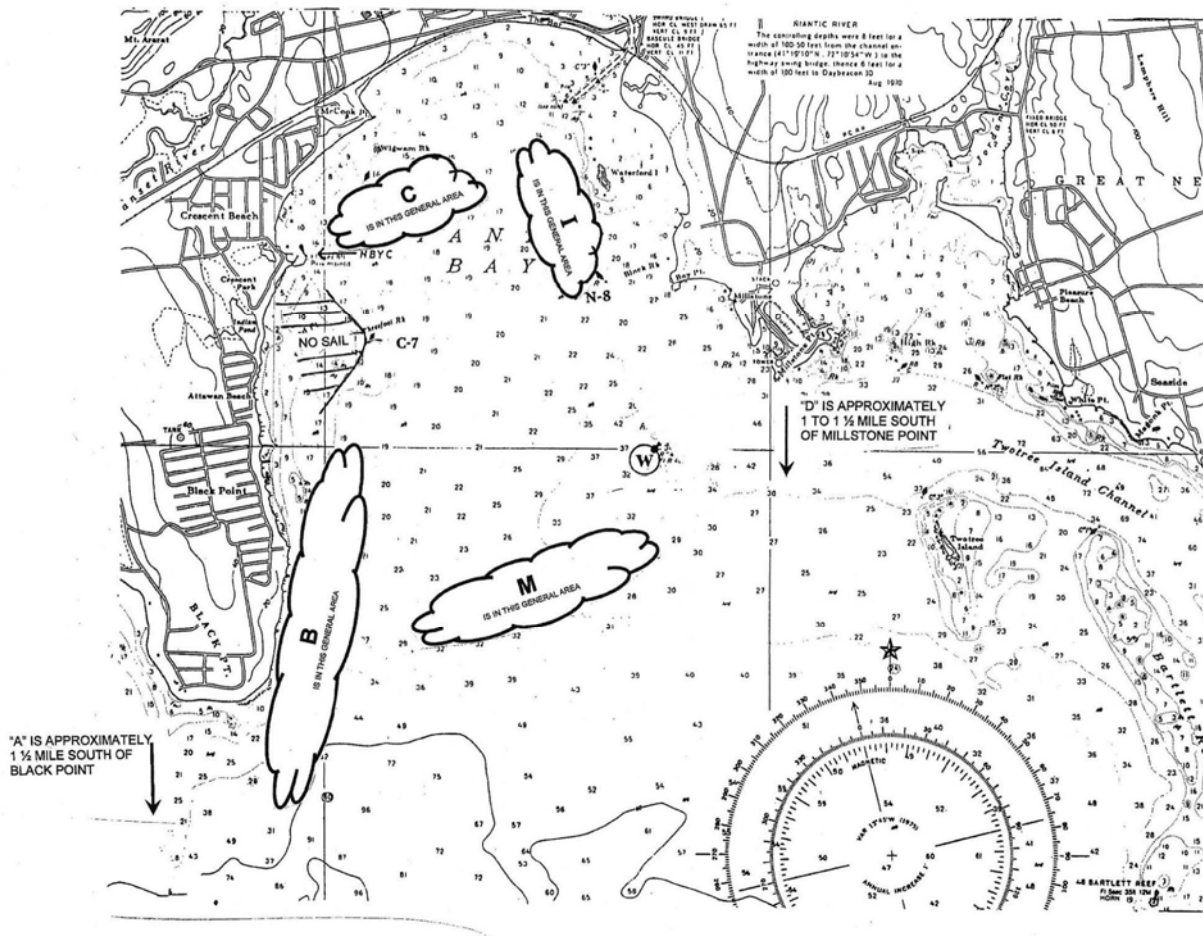
- 8.1 The course for each race for each Class will be posted on the signal board on the starboard side of the Committee Boat prior to the Warning for that Class. The Class will be displayed followed by a space, then followed by the course for that class. The courses will be displayed as the series of marks in the sequence in which they must be rounded (i.e., "1 HW" means Class 1 starts, rounds H, rounds W, then goes to finish). Any numeral inserted in the displayed course (except "8") indicates the number of times the preceding sequence must be repeated (ie., AL2 means AL then AL again). Ditto ("") marks mean; "same course as the course listed immediately above." Leave all marks to Port EXCEPT if a Green Flag is displayed on the Committee Boat which means; "Leave all marks to Starboard".

- 8.2. If (and only if) Mark H is listed on the course immediately before and/or immediately after mark 8, H is a Control Gate rather than a turning mark (ie, ...8HW..., or ...H8W...). If so listed, boats must pass between H and Hatchett Reef R"6" (rather than rounding H). This will allow for shortening the course to H if weather conditions so require.
- 8.3 Boats shall keep clear of the start and finish lines unless starting or finishing. A boat that breaks this rule is exonerated if she takes a Two-Turns Penalty (see rule 44.2). This changes rule 28.1.

9 Marks

- 9.1 All marks other than Government Marks will be orange or yellow inflatable marks. If the first mark is NOT a government mark, the approximate magnetic bearing from the starting line to the first mark will be displayed at the bottom of the course board on the Committee Boat.
- 9.2 The Race Committee will provide location of Mark H, if used, on the official race VHF channel 72. Failure to announce or hear the announcement will not be considered cause for redress.
- 9.3 Marks of the course are designated as follows:

8	Bell R"8" south of the Connecticut River
A	Inflatable approximately 1 ½ miles South of Black Point
B	Inflatable in vicinity of Black Point (see chart attached)
C	Inflatable in the vicinity of Crescent Beach (see chart attached)
D	Inflatable approximately 1 to 1 ½ miles South of Millstone Point
H	Inflatable SSE of R"6" Hatchett Reef (position announced). May be a turning mark or a Control Gate. See 8.1 above
I	Inflatable in the vicinity of Waterford Island (see chart attached)
L	Inflatable approximately ½ mile to leeward of the finish line
M	Inflatable located in the Middle of the Bay between Black Point and White Rock (see chart attached)
O	Orange inflatable mark to weather of the starting line
S	Bell R "4" approximately 1 mile south of Bartlett's Reef
W	Bell R "6" south of White Rock
Z	Mo(A) "PI" located approximately 2 miles north of Plum Island



10 The Start

- 10.1 Races will be started using Rule 26 (5-minute sequence) using either an automated horn or shotgun.
- 10.2 The starting line will be between the pole flying an orange flag on the Committee Boat and an inflatable mark. Stand off buoys (pink or orange balls) may be used at the Committee Boat. A standoff buoy is considered an extension of the Committee Boat and Yachts may neither touch them nor sail between a stand off buoy and the Committee Boat.
- 10.3 The starting sequence of classes will be in their order displayed starting at the top of the Committee Boat's starboard side signal board. Classes recalled will be restarted prior to starting the next class.

11 The Finish

- 11.1 The finish will be in the general area of the start, but may be relocated from the start line to afford a better final leg.
- 11.2 The finishing line will be between an inflatable mark, and the course side of the Committee Boat's mast which is flying an orange flag.
- 11.3 As an alternate to the Race Committee Boat, another boat flying a Race Committee flag and displaying an orange or yellow line flag may be used at the finish line.

12 Shortening Course

- 12.1 The course may be shortened for one or more classes only, or for all classes. If shortening of a course for all classes, only the flag "S" will be displayed. If the shortening of a course does not apply to all classes, the flags of those classes for which the shortened course applies will be displayed with flag "S".

13 Time Limit

- 13.1 The first boat to finish in any given class must finish no later than 1600 or that race will be abandoned. Any boat finishing any race later than 1700 will be scored DNF.

14 Protests

- 14.1 Protest forms are available at the Clubhouse. Protests shall be delivered at the Clubhouse within the protest time limit.
- 14.2 The protest period will begin with the raising of a red flag when the Committee Boat returns to the dock and ends one hour later indicated by the removal of the flag.

15 Scoring

- 15.1 Scoring for PHRF classes will be based on lowest corrected time using the "time-on-time" scoring system utilizing ECSA-PHRF TCF formula: $650/(500 + \text{PHRF})$ ratings.
- 15.2 If more than 1 race is completed for any class, scoring for that class will be determined using the Appendix A Low Point system, except that no races will be excluded (changes Appendix A). Any boat withdrawing from any race will be scored DNF for the series.

16 Safety

- 16.1 For purposes of safety and so that the Race Committee knows the status of competitors, a competitor who withdraws during a race should notify the Race Committee on Channel 72, or should notify the NBYC Club Manager on Channel 72 or 860-739-0558.

17 Official Boats

- 17.1 Official boats will display a Race Committee flag.

18 Disclaimer of Liability

- 18.1 Competitors participate in the regatta entirely at their own risk (see Rule 4, Decision to Race). The organizing authority will not accept any liability for material damage or personal injury sustained in conjunction with or prior to, during, or after the regatta.

19 Radio Communications

- 19.1 The Race Committee will utilize VHF channel 72 for race communications.